



BROADBAND CALIBRATED NOISE SOURCES



NoiseWave's NW-CS Calibrated Source Series are broadband calibrated noise sources, ideal for Noise Figure measurement and a variety of built-in test applications. These products feature high output ENR with excellent flatness and stability. Designed for demanding applications, these rugged units can be economically deployed in commercial applications.

Input Voltage: +28Vdc
 Output Connector: SMA female
 Noise Output Variation: <0.01 dB/°C, <0.1 dB/%V
 Operating Temperature: -55°C to +85°C
 Storage Temperature: -65°C to +125°C

MODEL	FREQUENCY RANGE	MINIMUM OUTPUT ENR (dB)	FLATNESS (dB)	VSWR	CALIBRATED FREQUENCIES (MHz)	I (mA)
NW2G-15-CS	10kHz - 2GHz	15	+/- 1.50 max	1.25:1 max	10, 100, 1000, 2000	20 max
NW2G-30-CS	10kHz - 2GHz	30	+/- 1.50 max	3.0:1 max	10, 100, 1000, 2000	20 max
NW3G-15-CS	100kHz - 3GHz	15	+/- 1.50 max	1.25:1 max	10, 100, 1000, 2000, 3000	20 max
NW3G-30-CS	100kHz - 3GHz	30	+/- 1.50 max	1.25:1 max	10, 100, 1000, 2000, 3000	20 max
NW6G-15-CS	10MHz - 6GHz	15	+/- 2.00 max	1.35:1 max	10, 100 and 1GHz steps	25 max
NW6G-26-CS	10MHz - 6GHz	26	+/- 2.00 max	1.35:1 max	10, 100 and 1GHz steps	25 max
NW18G-15-CS	1GHz - 18GHz	15	+/- 2.00 max	1.5:1 max	1GHz steps	25 max
NW18G-23-CS	1GHz - 18GHz	23	+/- 2.00 max	3.0:1 max	1GHz steps	25 max
NW18G40-22-CS	18GHz - 40GHz	22	+/- 2.50 max	3.0:1 max	1GHz steps	30 max

OPTIONS:

- 1: +15 Vdc
- 2: SMA male output connector
- 3: N female output connector
- 4: BNC jack input connector

NoiseWave offers military-screened models, additional standard models, and custom designs with different frequency ranges, output levels, DC supply voltage, and mechanical configurations. Contact the factory to discuss your specific requirements.

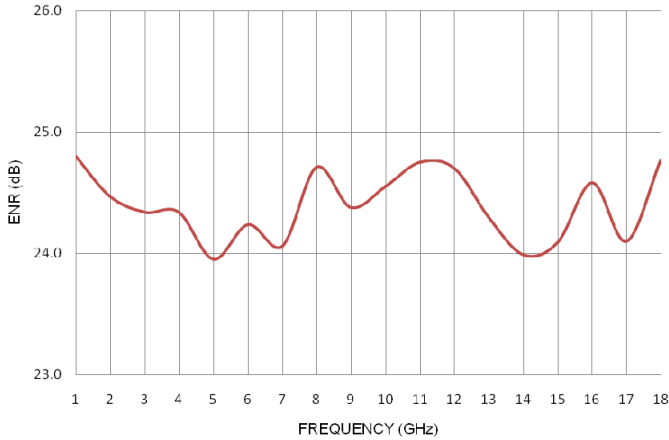
Phone: 973-386-1119
 Fax: 973-386-1131
 E-mail: info@noisewave.com
 Website: <http://www.noisewave.com>

REV: C
 9/2016

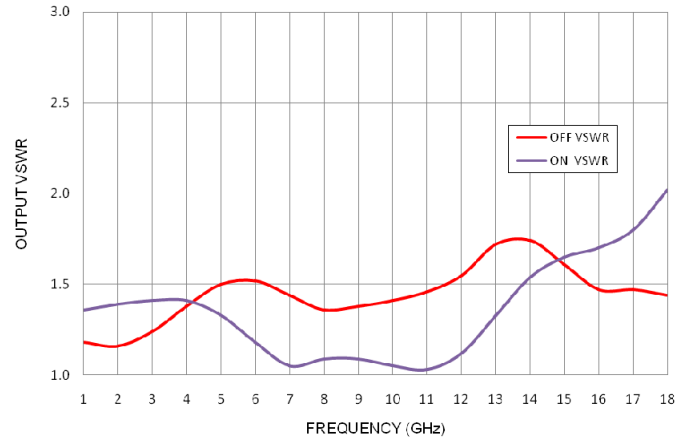


BROADBAND CALIBRATED NOISE SOURCES

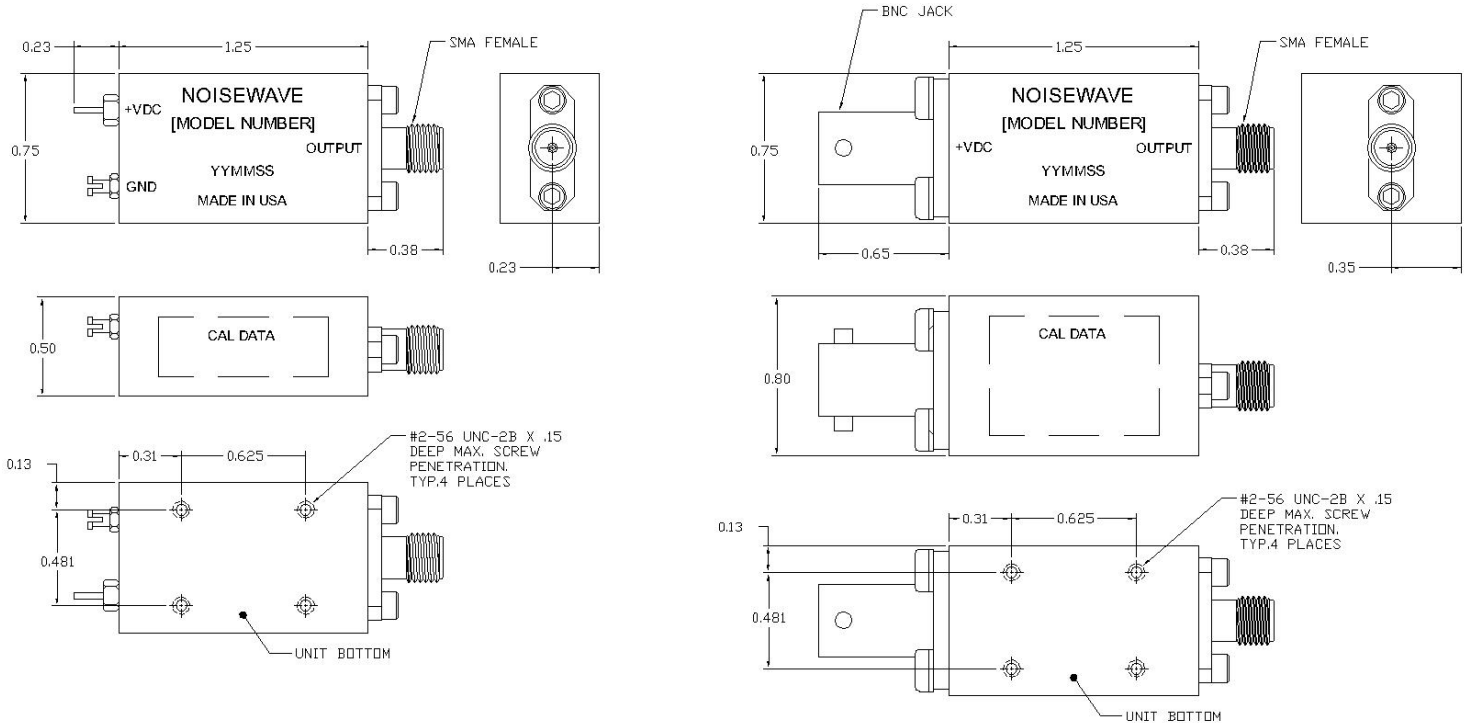
NW18G-23-CS - Typical ENR



NW18G-23-CS - Typical On and Off VSWR



STANDARD OUTLINES



(DIMENSIONS IN INCHES)

ADDITIONAL STANDARD AND CUSTOM PACKAGES AVAILABLE. CONTACT THE FACTORY TO DISCUSS YOUR SPECIFIC REQUIREMENTS.

Phone: 973-386-1119
 Fax: 973-386-1131
 Email: info@noisewave.com
 Website: <http://www.noisewave.com>

REV: C
 9/2016