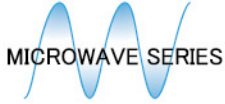




3.3GHz Spectrum Analyzer for EMI

MSA338E



“ 3.3GHz Spectrum Analyzer for EMI/MSA338E ” is a core product of “ Precompliance EMI Test System /MR2300. ” This Spectrum Analyzer was developed for EMI test, and equips with the Quasi-peak and Average and 9kHz(6dB)•120kHz(6dB) Resolution bandwidth. If combined with Magnetic field probe/CP-2S (option), it takes only a short time to classify the problems detected by the measurement of radiated emission or conducted emission.

MICRONIX

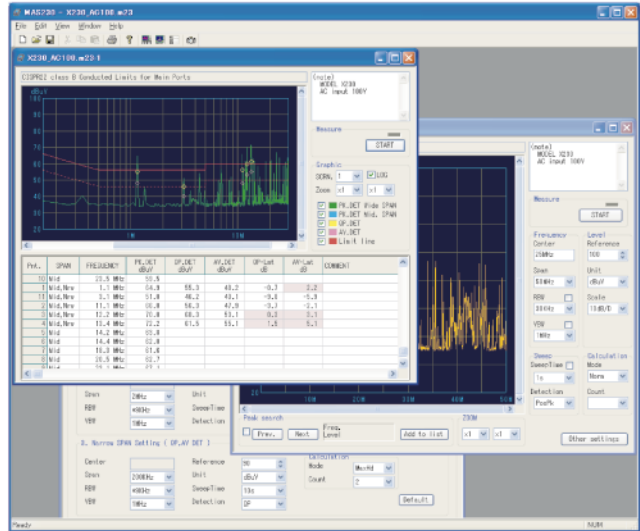
◆ Automatic setup for EMI test

The parameters necessary for EMI test such as bandwidth and limit line are automatically set just by inputting regulation users need. Therefore, it is possible to set it up easily even at the first time use.

In addition, as the standard value can be changed freely, it is possible for users to measure as matching with their needs.

◆ Making Report

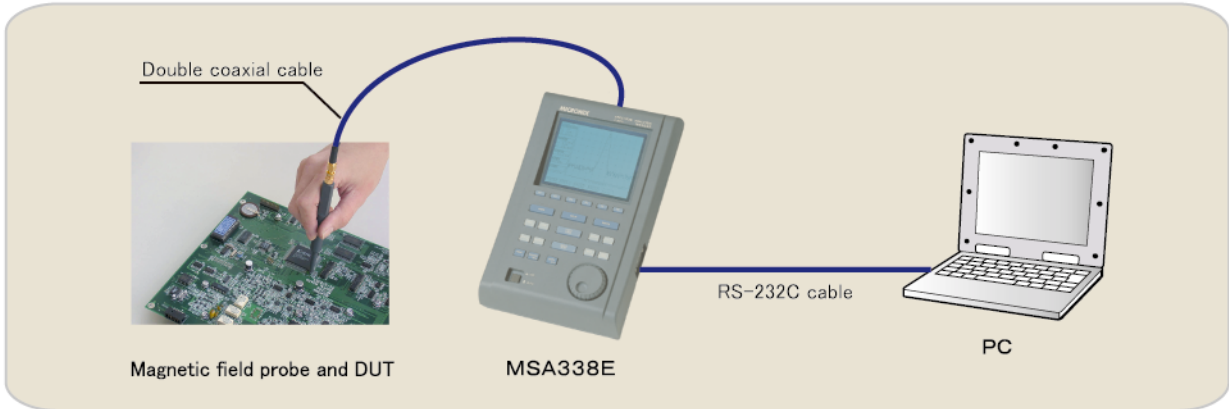
The measured data can be saved in “csv form” or “text form” and arranged to a report.



Example of Application

◆ Debugging PCD

Parameters are setted automatically by selecting a regulation in the PC software. The radiated emission from EUT is measured by the spectrum analyzer for EMI / MSA338E and displayed on the PC screen, after received by the magnetic field probe/CP-2S.



Magnetic field probe/ CP-2S

As the magnetic field detection portion of CP-2S is of a shielded loop structure that adopts glass ceramic multi-layer board technology of excellent high frequency characteristics, it is possible to take measurement at high reproducibility by detecting magnetic field components only. The measuring frequency range is as broad as 10MHz to 3GHz, and the measured value is calibrated in the instrument

Specification

Items	specifications
Frequency range	10MHz to 3GHz
Space resolution,	approx. 0.25mm (depending on objects.)
Dimensions	outside: 12 φ × 135mm probe tip: 2mm(W) × 1mm(T)
Connector	SMA(P)